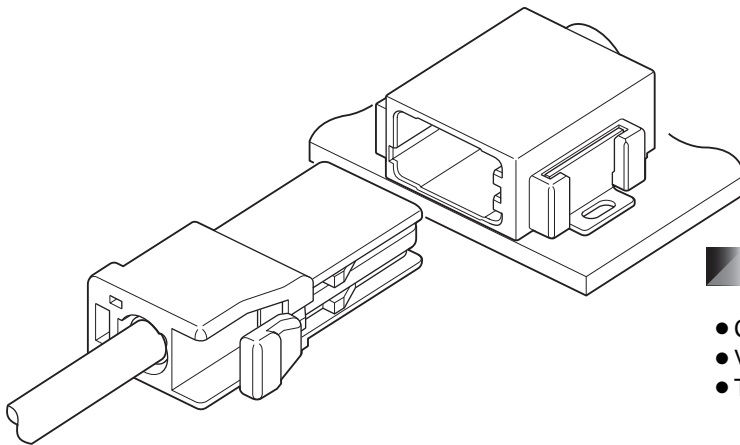


Connector was developed as a coaxial connector for high-frequency application to automobile. This connector achieves low profile and miniaturization.



Features

● Compact, low profile design

Miniaturized compared to the conventional coaxial connector for automobile.

The lowest profile is achieved as an on-board type connector.

● Superb high-frequency performance

V.S.W.R of this connector achieves 1.5 or less.

● Locking structure

The locking feature will avoid the housing coming off due to wiring process and external shock and mis-insertion of the connector.

Specifications

- Current rating: 1.0A AC, DC
- Voltage rating: 250V
- Temperature range: -40°C to +105°C
(including temperature rise in applying electrical current)
- Contact resistance:
 - Inner conductor; Initial value/20mΩ max.
After environmental testing/20mΩ max.
 - Outer conductor; Initial value/35mΩ max.
After environmental testing/35mΩ max.
- Insulation resistance: 1,000MΩ min.
- Withstanding voltage: 300V AC/minute
- Applicable wire: 1.5DS-GXC-SP
made by Sumitomo (SEI) Electronic Wire, Inc.
(Inner conductor/φ0.6mm, Insulation/φ1.6mm,
Outer conductor O.D./φ2.2mm, Sheath/φ3.0mm)
- Frequency range: DC to 6GHz
- Characteristic impedance: 50Ω

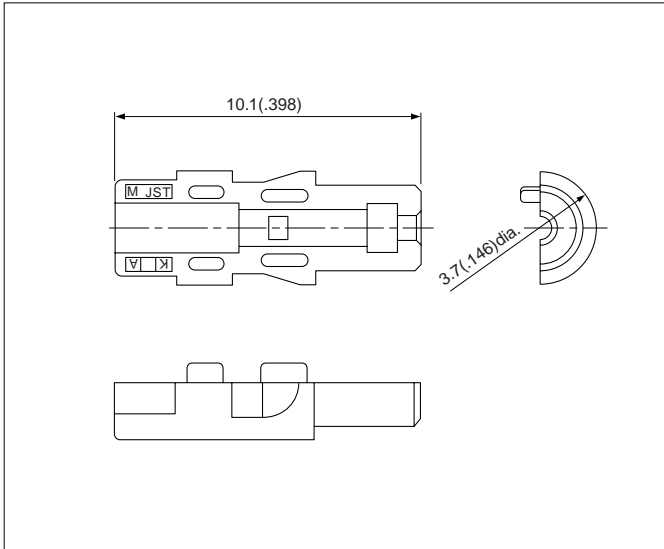
* Contact JST if Lead-Free product is required.

* Contact JST for details.

EA1 CONNECTOR

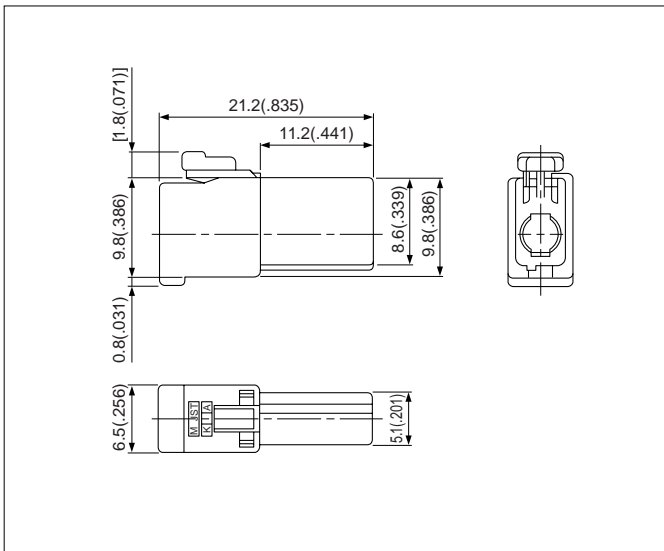
High frequency connectors

Inner housing



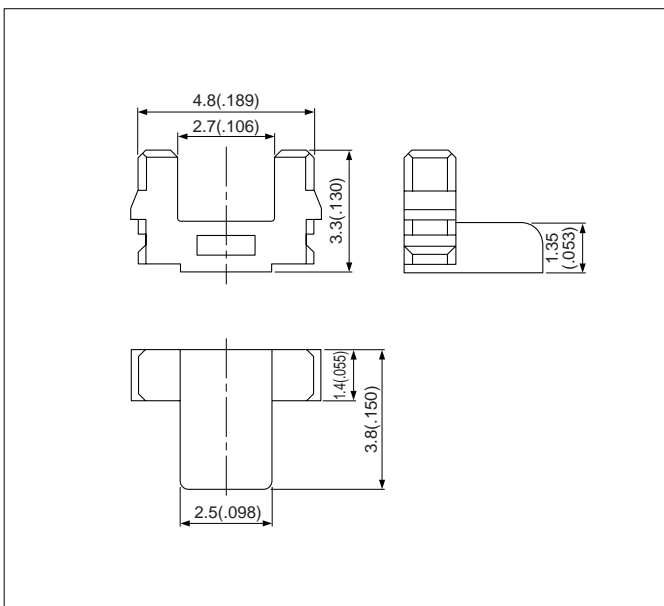
Model No.	Q'ty/box
EA1-PHN-2S	1,000
Material	
Thermoplastic resin, natural (white)	

Outer housing



Model No.	Q'ty/box
EA1-PHG-1K	500
Material	
Thermoplastic resin, black	

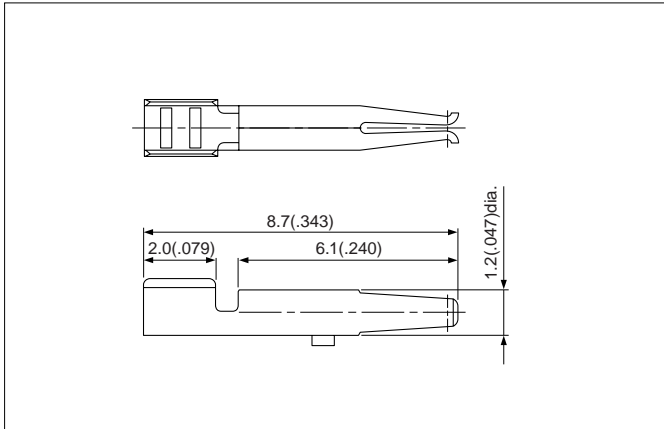
Retainer



Model No.	Q'ty/box
EA1-PRT-3H	5,000
Material	
Thermoplastic resin, gray	

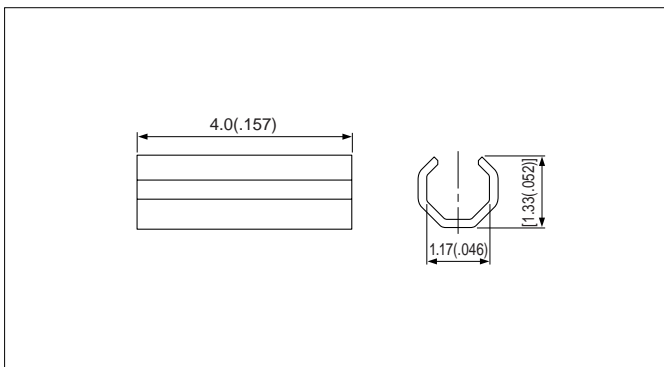
- HT
- AIT
- HCM
- MIO
- CPT
- BMD
- CIT
- HIC
- SQS
- SQM
- SQH
- SQSI
- SQW
- SQF
- SHUNT/RING
- FEL
- FMT
- FOX
- CN
- EA1**
- WPZ
- JUNCTION BOX
- INDEX

Female terminal



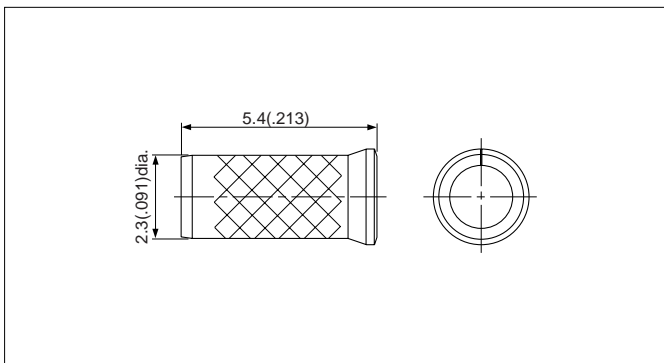
Model No.	Q'ty/reel
EA1-SCS342	25,000
Material and Finish	
Phosphor bronze, nickel-undercoated, Mating part; gold-plated Crimping part; tin-plated (reflow treatment)	

Sleeve



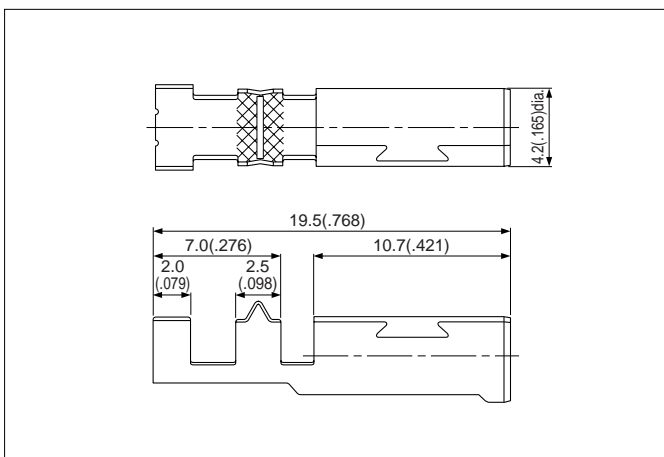
Model No.	Q'ty/box
EA1-SLP290	10,000
Material and Finish	
Copper alloy, tin-plated (reflow treatment)	

Ferrule



Model No.	Q'ty/box
EA1-FLP290A	5,000
Material and Finish	
Copper alloy, tin-plated (reflow treatment)	

Shell

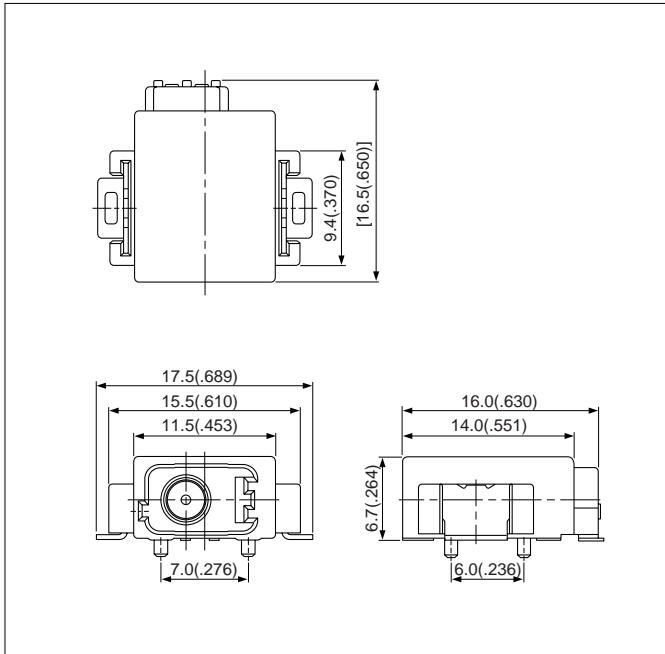


Model No.	Q'ty/box
EA1-SSP391	5,000
Material and Finish	
Copper alloy, nickel-undercoated, tin/copper alloy-plated	

EA1 CONNECTOR

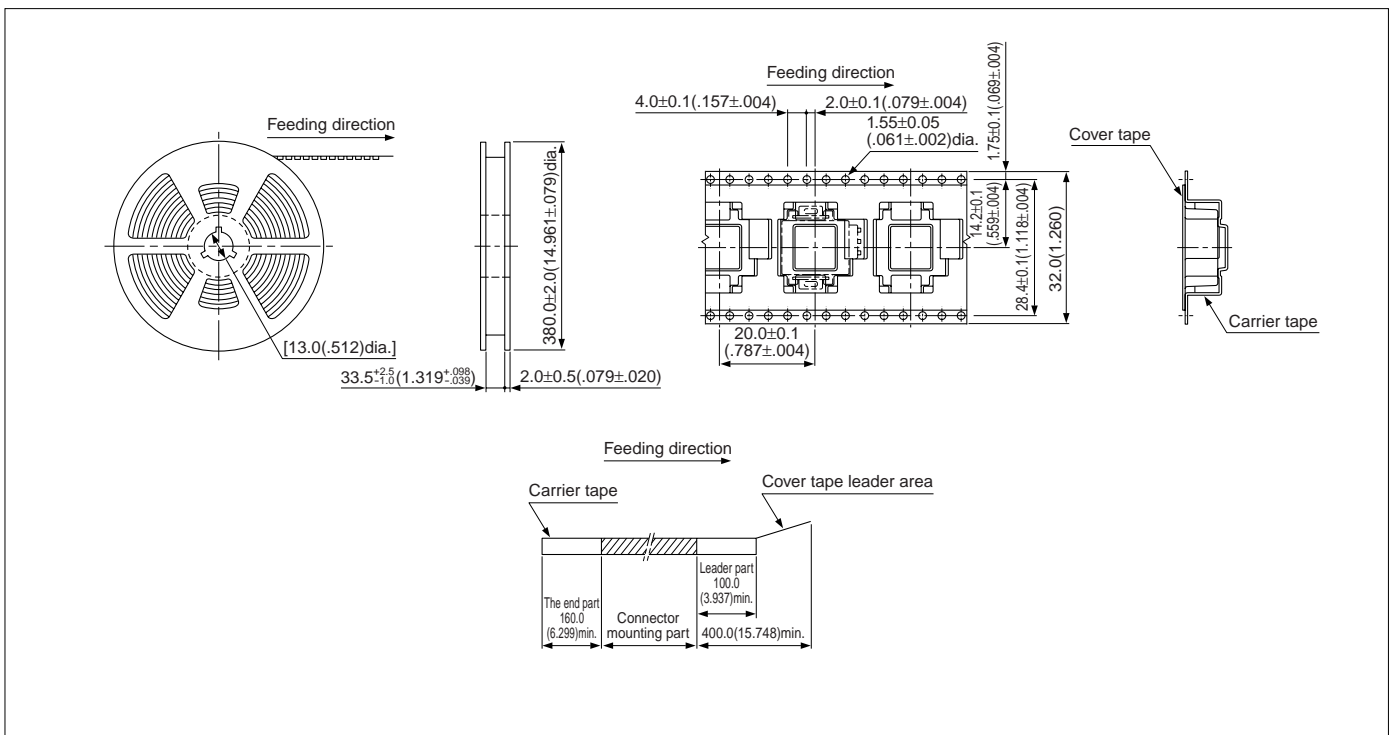
High frequency connectors

Header

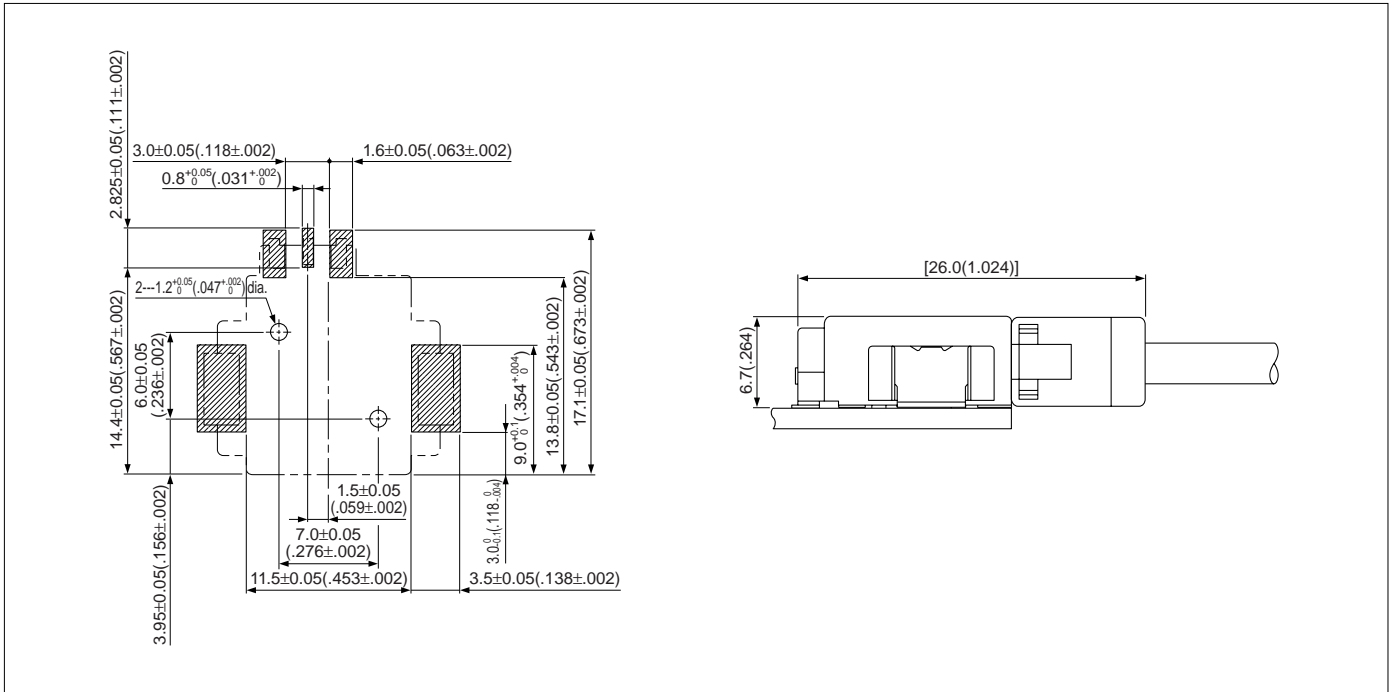


Model No.	Q'ty/reel
EA1-1RAS-029100-K1-TF	500
Material and Finish	
Terminal: Phosphor bronze, nickel-undercoated, gold-plated (with nickel stripe)	
Housing: Heat resisting resin, black	
Peg: Brass, copper-undercoated, tin-plated (reflow treatment)	
Shell: Phosphor bronze, nickel-undercoated, tin/copper alloy-plated	

Taping Specifications



PC board layout and Assembly layout



Note: 1. Tolerances are non-cumulative: ±0.05mm (±.002") for all centers.
 2. The dimensions above should serve as a guideline. Contact JST for details.

Crimping machine, Applicator

Strip terminal	Crimping machine	Crimp applicator MKS-L	
		Dies	Crimp applicator with dies
EA1-SCS342	AP-K2N	MK/EA1-SCS	APLMK EA1-SCS

Note: When crimping operation is conducted by using other than above applicator and die set, JST cannot guarantee the performance of connector.

Jig

Jig	Hand crimp tool
Sleeve insertion jig	H3-SLIT-EA1
Shell insertion jig	H3-SIT-EA1
Shell crimping jig	H2-CP-EA1
Hand press	HPD-M2A(A)