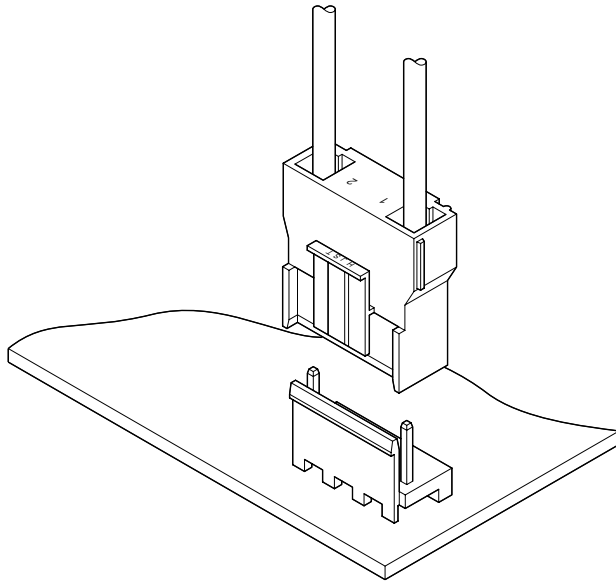




# VT CONNECTOR

**11.88mm pitch/Disconnectable Crimp style connectors**



**The VT connector is a 11.88mm pitch disconnectable crimp style connector with current rating of 12A. It has features such as the PC board locking device, misinsertion preventive construction and arm-lock mechanism. Its header is applicable to reinforced PC boards with eyelets.**

- Connectable to vinyl insulated flat cables
- Use of PC board locking device
- Correct and secure mating
- Applicable to reinforced PC boards with eyelets

## Specifications

- Current rating: 12A AC, DC (AWG #16)
- Voltage rating: 250V AC, DC
- Temperature range: -25°C to +85°C  
(including temperature rise in applying electrical current)
- Contact resistance: Initial value/10m Ω max.  
After environmental testing/20m Ω max.
- Insulation resistance: 1,000M Ω min.
- Withstanding voltage: 1,500V AC/minute
- Applicable wire: AWG #20 to #16
- Applicable PC board thickness: 1.6mm
- \* RoHS compliant products are published.
- \* Refer to "General Instruction and Notice when using Terminals and Connectors" at the end of this catalog.
- \* Contact JST for details.

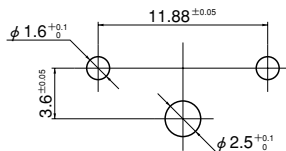
## Standards

Recognized E60389

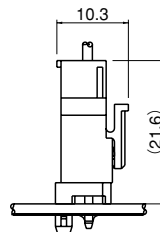
Certified LR20812

R9151561

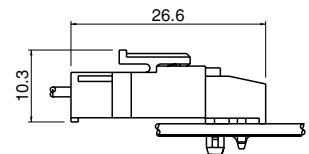
## PC board layout (viewed from component side) and Assembly layout



Top entry type



Side entry type

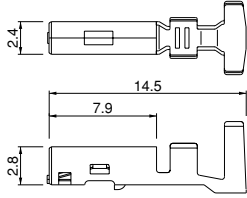


Note: 1. Tolerances are non-cumulative: ±0.05mm for all centers.

2. Hole dimensions differ according to the kind of PC board and piercing method. The dimensions above should serve as a guideline. Contact JST for details.

# VT CONNECTOR

## Contact



Model No.	Applicable wire		Q'ty / reel
	AWG #	Insulation O.D. (mm)	
<b>SVT-41T-P1.1</b>	20~16	2.7 ~3.9	2,500

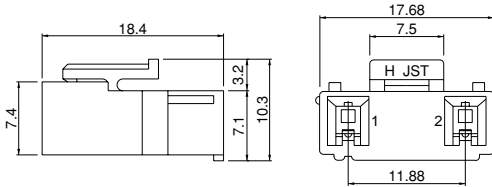
### Material and Finish

Alloy (phosphor bronze system), tin-plated (reflow treatment)

### RoHS compliance

Contact	Crimping machine	Applicator		
		Crimp applicator	Dies	Crimp applicator with dies
<b>SVT-41T-P1.1</b>	AP-K2N	MKS-L	MK/SVT-41-11	APLMK SVT41-11

## Housing



Circuits	Model No.	Q'ty / bag
2	<b>VTR-02</b>	500

### Material

PA 66, UL94V-0, natural (white)

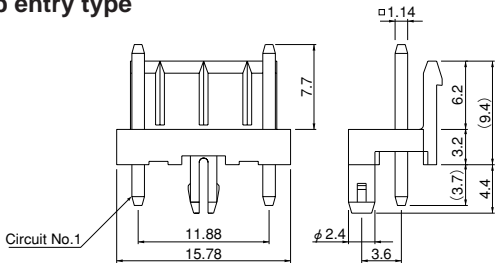
### RoHS compliance

<For reference> As the color identification, the following alphabet shall be put in the underlined part. For availability, delivery and minimum order quantity, contact JST.

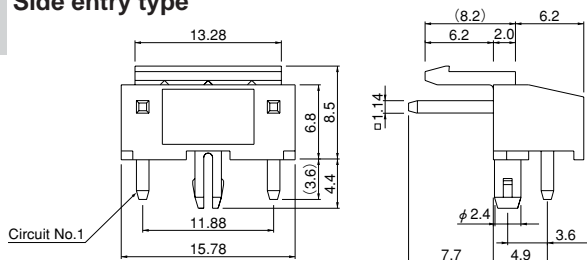
ex. **VTR-02-oo**  
(blank)...natural (white)  
Z...ivory

## Locking header

### Top entry type



### Side entry type



Circuits	Model No.		Q'ty / box	
	Top entry type	Side entry type	Top entry type	Side entry type
2	<b>B02B-VT</b>	<b>S02B-VT</b>	500	250

### Material and Finish

Post: Copper, tin-plated (reflow treatment)  
Wafer: Glass-filled PA 66, UL94V-0, natural (ivory)

**RoHS compliance** This product displays (LF)(SN) on a label.