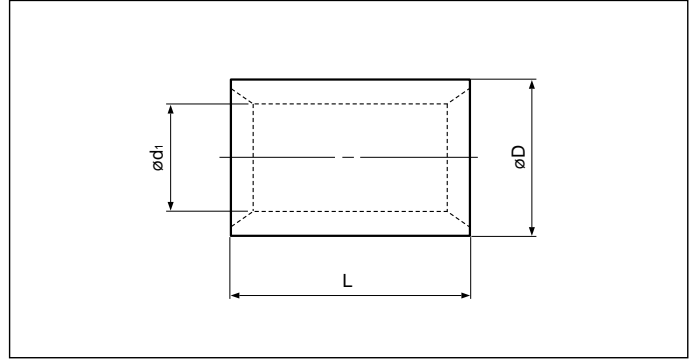


Solderless splices

**PARALLEL**



**Actual**

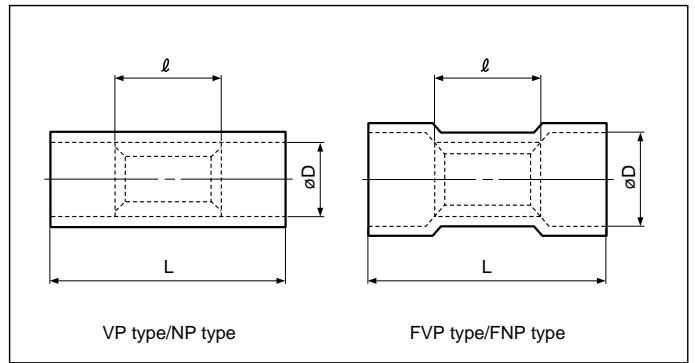
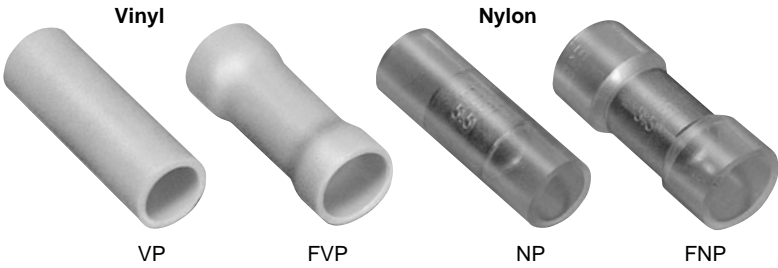
Refer to page 150 for actual size of the splice.

**Non-insulated**

File No.: E42024 LR20812 675016/689021

Applicable Wire AWG#(mm <sup>2</sup> )	Part No.	Standard	Dimensions mm (in.)			Tool No.												Qty/box							
			L	ø D	ø d <sub>1</sub>	YHT-2210	YHT-8S	YA-1	YA-2	YA-4	YA-5	YPT-60N	YPT-150-1	BCT-0514	BCT-860N	BCT-8150	YET-40-1			YET-150-1	YET-300-1	YF-1	E-4		
22 to 16 (0.25 to 1.65)	P-1.25		8.0 (.315)	3.3 (.130)	1.7 (.067)	0	0	0	0	0	0	0	0	0	0	0	0	0	0	0	0	0	0	1,000	
16 to 14 (1.04 to 2.63)	P-2		8.0 (.315)	4.1 (.161)	2.3 (.091)	0	0	0	0	0	0	0	0	0	0	0	0	0	0	0	0	0	0	1,000	
12 to 10 (2.63 to 6.64)	P-5.5		8.5 (.335)	5.4 (.213)	3.4 (.134)	0	0	0	0	0	0	0	0	0	0	0	0	0	0	0	0	0	0	500	
8 (6.64 to 10.52)	P-8		9.5 (.374)	7.0 (.276)	4.5 (.177)	0	0	0	0	0	0	0	0	0	0	0	0	0	0	0	0	0	0	200	
6 (10.52 to 16.78)	P-14		11.0 (.433)	8.9 (.350)	5.8 (.228)	0	0	0	0	0	0	0	0	0	0	0	0	0	0	0	0	0	0	100	
4 (16.78 to 26.66)	P-22		13.5 (.531)	11.3 (.445)	7.7 (.303)	0	0	0	0	0	0	0	0	0	0	0	0	0	0	0	0	0	0	50	
2 (26.66 to 42.42)	P-38		16.5 (.650)	13.2 (.520)	9.4 (.370)	0	0	0	0	0	0	0	0	0	0	0	0	0	0	0	0	0	0	25	
1/0 (42.42 to 60.57)	P-60		19.0 (.748)	15.3 (.602)	11.4 (.449)	0	0	0	0	0	0	0	0	0	0	0	0	0	0	0	0	0	0	10	
2/0 (60.57 to 76.28)	P-70		19.0 (.748)	17.5 (.689)	13.3 (.524)	0	0	0	0	0	0	0	0	0	0	0	0	0	0	0	0	0	0	20	
3/0 (76.28 to 96.3)	P-80		19.5 (.768)	19.5 (.768)	14.5 (.571)	0	0	0	0	0	0	0	0	0	0	0	0	0	0	0	0	0	0	10	
4/0 (96.3 to 117.2)	P-100		20.0 (.787)	22.1 (.870)	16.4 (.646)	0	0	0	0	0	0	0	0	0	0	0	0	0	0	0	0	0	0	20	
250 to 300MCM (117.2 to 152.05)	P-150		27.0(1.063)	26.4(1.039)	19.5 (.768)	0	0	0	0	0	0	0	0	0	0	0	0	0	0	0	0	0	0	10	
350MCM (152.05 to 192.6)	P-180		28.5(1.122)	28.5(1.122)	21.0 (.827)	0	0	0	0	0	0	0	0	0	0	0	0	0	0	0	0	0	0	10	
400MCM (192.6 to 242.27)	P-200		32.0(1.260)	32.4(1.276)	24.0 (.945)	0	0	0	0	0	0	0	0	0	0	0	0	0	0	0	0	0	0	10	
600 to 650MCM (242.27 to 325)	P-325		37.0(1.457)	37.0(1.457)	28.0(1.102)	0	0	0	0	0	0	0	0	0	0	0	0	0	0	0	0	0	0	10	

Note:1) Products with the JIS mark conform to JIS C2806.  
 2) "Applicable Wires" indicates the total cross-sectional area.  
 3) Delivery lead times may vary depending on the product. Contact JST for details.



**Actual**

Refer to page 150 for actual size of the splice.

**Vinyl or nylon insulated**

File No.: E42024 LR20812

Applicable Wire AWG#(mm <sup>2</sup> )	Part No.		Standard	Dimensions mm (in.)			Color	Tool No.						Qty/box	
	Vinyl	Nylon		L	ℓ	ø D		YNT-2216	YNT-1614	YNT-1210S	YA-1	YA-2	YA-4	BCT-0514	Vinyl
22 to 16 *(0.25 to 1.65)	VP-1.25	NP-1.25		16.0 (.630)	8.0 (.315)	3.2 (.126)	0	0	0	0	0	0	0	1,000	1,000
	FVP-1.25	FNP-1.25				4.0 (.157)									
16 to 14 (1.04 to 2.63)	VP-2	NP-2		16.0 (.630)	8.0 (.315)	3.9 (.154)	0	0	0	0	0	0	0	1,000	500
	FVP-2	FNP-2				4.5 (.177)								500	250
12 to 10 (2.63 to 6.64)	VP-5.5	NP-5.5		20.5 (.807)	8.5 (.335)	5.4 (.213)	0	0	0	0	0	0	0	500	250
	FVP-5.5	FNP-5.5				6.8 (.268)								250	125

Note:1) \*The crimping will be more secure if the total cross-sectional area of the wire is at least 0.5 mm<sup>2</sup>.  
 Examples: If the cross-sectional area of the wire is 0.3mm<sup>2</sup>, fold the wire in two when crimping the terminal.  
 If the cross-sectional area of the wire is 0.5mm<sup>2</sup>, crimp the terminal onto the wire as it is.  
 2) "Applicable Wires" indicates the total cross-sectional area.  
 3) Delivery lead times may vary depending on the product. Contact JST for details.

## Wire combination table for parallel splices specified by UL

AWG#	↓ Number of wires																			P-1.25
22	2	2	2	1	1	1	1	1												
20	1			2	1	1				3	2	1								
18		1			1		1					1	2							
16								1												
AWG#	↓ Number of wires																			P-2
22	2	2	2	2	1	1	1	1	1	1	1	1								
20	1				2	1	1	1					3	2	2	2	1	1	1	1
18		1				1			2	1	1			1			2	1	1	3
16			1				1			1		1		1		1		1	1	2
16																				
AWG#	↓ Number of wires																			P-5.5
18	2	1	1	1	1															
16		1					2	1	1	2										
14			1					1												
12				1					1											
10					1															
AWG#	↓ Number of wires																			P-8
16		1																		
14			1																	
12	2			1																
10		1	1	1																
AWG#	↓ Number of wires																			P-14
14		1																		
12			1																	
10	2																			
8		1	1																	
AWG#	↓ Number of wires																			P-22
10		1																		
8	2		1																	
6		1	1																	
AWG#	↓ Number of wires																			P-38
8		1																		
6	2																			
4		1																		
AWG#	↓ Number of wires																			P-60
6		1																		
4	2																			
2		1																		
AWG#	↓ Number of wires																			P-70
6		1																		
2	2																			
1/0		1																		
AWG#	↓ Number of wires																			P-80
4	1																			
2/0	1																			
AWG#	↓ Number of wires																			P-100
2	1																			
2/0	1																			
AWG#	↓ Number of wires																			P-150
2		1																		
1/0			1	1																
2/0	2		1																	
3/0		1		1																
AWG#	↓ Number of wires																			P-180
1/0		1																		
2/0			1	1																
3/0	2			1																
4/0		1	1																	
AWG#	↓ Number of wires																			P-200
2/0			1																	
3/0		1																		
4/0	2	1																		
250/MCM			1																	
AWG#	↓ Number of wires																			P-325
4/0	1																			
250/MCM		2																		
300/MCM	1																			