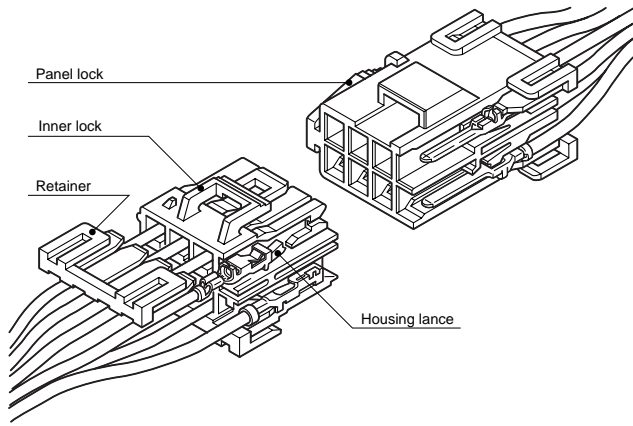


YL CONNECTOR

4.5mm pitch/Disconnectable Crimp style Wire-to-wire connectors



The retainer features added protection against non-insertion or disconnection.

- **Housing lance**
- **Secondary retainers**
- **Inner-housing lock**
- **Panel lock construction**

Standards

- Recognized E60389
- Certified LR20812
- R9351052

Specifications

- Current rating: 10A AC, DC max. (7A when retainers are mounted)
- Voltage rating: 300V AC, DC max.
- Temperature range: -25°C to +90°C (including temperature rise in applying electrical current)
- Contact resistance: Initial value/7m Ω max. After environmental testing/10m Ω max.
- Insulation resistance: 1,000M Ω min.
- Withstanding voltage: 1,500V AC/minute
- Applicable wire: AWG #26 to #16 0.13 to 1.25mm²
- Applicable panel thickness: 0.7 to 2.0mm
- * RoHS compliant products are published.
- * Temperature Range: The aforementioned temperature range of this connector is described in JST Standard Product Specification. Maximum temperature registered in UL is 105°C.
- * Refer to "General Instruction and Notice when using Terminals and Connectors" at the end of this catalog.
- * Contact JST for details.

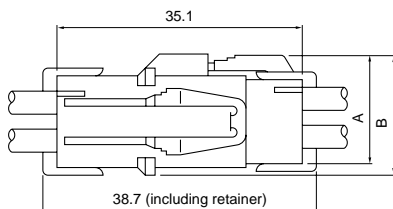
Note: The current rating varies depending on the number of circuits and the wire size used in each connector. The table below lists the current rating as a function of the number of circuits and the wire size.

Current unit: A

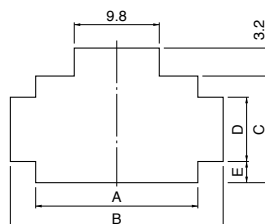
Circuits	Wire size (AWG)					
	#16	#18	#20	#22	#24	#26
1	10	7	5	4	3	2
2	10	7	5	4	3	2
3	9	6	4	4	3	2
4	9	6	4	4	3	2
6	8	5	3	3	2	2
8	7	4	3	3	2	2
9	6	4	3	3	2	2
12	6	3	2	2	2	2
15	5	3	2	2	2	1
16	5	3	2	2	2	1
21	5	3	2	2	2	1

Note: Secondary retainers cannot be used with AWG #16 wires.

Assembly layout and Panel Layout



Type	Circuits	Dimensions (mm)	
		A	B
Single row	2 · 3	9.5	10.8
2-row	4 · 6 · 8 · 12 · 16	15.3	16.6
3-row	9 · 12 · 15 · 21	20.5	21.8



Circuits	Receptacle housing Model No.	Panel thickness (mm)	0.7 to 2.0			0.7 to 0.8		0.9 to 1.3		1.4 to 2.0	
			A	B	C	D ^{±0.1}	E ^{±0.1}	D ^{±0.1}	E ^{±0.1}	D ^{±0.1}	E ^{±0.1}
2	YLR-02V	10.7	16.8	7.1	4.4	1.35	5.0	1.05	5.6	0.75	
3	YLR-03V	15.3	21.3	7.1	4.4	1.35	5.0	1.05	5.6	0.75	
4	YLR-04V	10.7	16.8	12.9	7.1	2.9	7.7	2.6	8.3	2.3	
6	YLR-06V	15.3	21.3	12.9	7.1	2.9	7.7	2.6	8.3	2.3	
8	YLR-08V	19.8	25.8	12.9	7.1	2.9	7.7	2.6	8.3	2.3	
9	YLR-09V	15.3	21.3	18.2	7.1	5.55	7.7	5.25	8.3	4.95	
12	YLR-12V	19.8	25.8	18.2	7.1	5.55	7.7	5.25	8.3	4.95	
	YLR-12VA	28.9	34.8	12.9	7.1	2.9	7.7	2.6	8.3	2.3	
15	YLR-15V	24.4	30.3	18.2	7.1	5.55	7.7	5.25	8.3	4.95	
16	YLR-16V	37.9	43.8	12.9	7.1	2.9	7.7	2.6	8.3	2.3	
21	YLR-21V	33.5	39.3	18.2	7.1	5.55	7.7	5.25	8.3	4.95	

1. Punch holes in the panel according to the sketch and table shown above. Burrs must be removed.
2. The strength of the panel must be considered when punching two or more holes.
3. The connector must be inserted from the same side as the hole is punched.

YL CONNECTOR

Housing

Material: Housing...PA 66, UL94V-0, white
Retainer...Glass-filled PA 66, UL94V-0, ivory

Circuits	Voltage rating	Current rating	Receptacle housing(for pin contact)	Plug housing(for socket contact)	Retainer
1	300V	7A (10A)	YLR-01VF 	YLP-01V 	YLS-01V
			Q'ty / bag 500		
2	300V	7A (10A)	YLR-02V 	YLP-02V 	YLS-02V
			YLR-02VF 		
3	300V	6A (9A)	YLR-03V 	YLP-03V 	YLS-03V (commonly used for 3-circuit housing and 6-circuit housing)
			YLR-03VF 		

RoHS compliance

Note: Current rating in parentheses is for use with AWG #16 wire. (Retainers are not mountable.)

YL CONNECTOR

Housing

Material: Housing...PA 66, UL94V-0, white
Retainer...Glass-filled PA 66, UL94V-0, ivory

Circuits	Voltage rating	Current rating	Receptacle housing(for pin contact)	Plug housing(for socket contact)	Retainer
4	300V	6A (9A)	YLR-04V 	YLP-04V 	YLS-02V
			YLR-04VF 		
6	300V	5A (8A)	YLR-06V 	YLP-06V 	YLS-03V (commonly used for 3-circuit housing and 6-circuit housing)
			YLR-06VF 		
8	300V	4A (7A)	YLR-08V 	YLP-08V 	YLS-08V
			YLR-08VF 		
9	300V	4A (6A)	YLR-09V 	YLP-09V 	Q'ty / bag 500

RoHS compliance

Note: Current rating in parentheses is for use with AWG #16 wire. (Retainers are not mountable.)

YL CONNECTOR

Housing

Material: Housing...PA 66, UL94V-0, white
Retainer...Glass-filled PA 66, UL94V-0, ivory

Circuits	Voltage rating	Current rating	Receptacle housing(for pin contact)		Plug housing(for socket contact)		Retainer	
			Model	Q'ty / bag	Model	Q'ty / bag	Model	Q'ty / bag
12	300V	3A (6A)	YLR-12VA 	200	YLP-12VA 	200	YLS-12V 	1,000
			YLR-12V 	200	YLP-12V 	200	—	—
15	300V	3A (5A)	YLR-15V 	200	YLP-15V 	200	—	—
16	300V	3A (5A)	YLR-16V 	100	YLP-16V 	200	YLS-16V 	1,000

RoHS compliance

Note: Current rating in parentheses is for use with AWG #16 wire. (Retainers are not mountable.)

YL CONNECTOR

Housing

Material: Housing...PA 66, UL94V-0, white

Circuits	Voltage rating	Current rating	Receptacle housing(for pin contact)		Plug housing(for socket contact)		Retainer	
			YLR-21V	Q'ty / bag	YLP-21V	Q'ty / bag		Q'ty / bag
21	300V	3A (5A)		100		200	—	—

RoHS compliance

Note: Current rating in parentheses is for use with AWG #16 wire. (Retainers are not mountable.)